

**"Far Better To Build A Boy Than To Mend A Man"**



# **Governance**

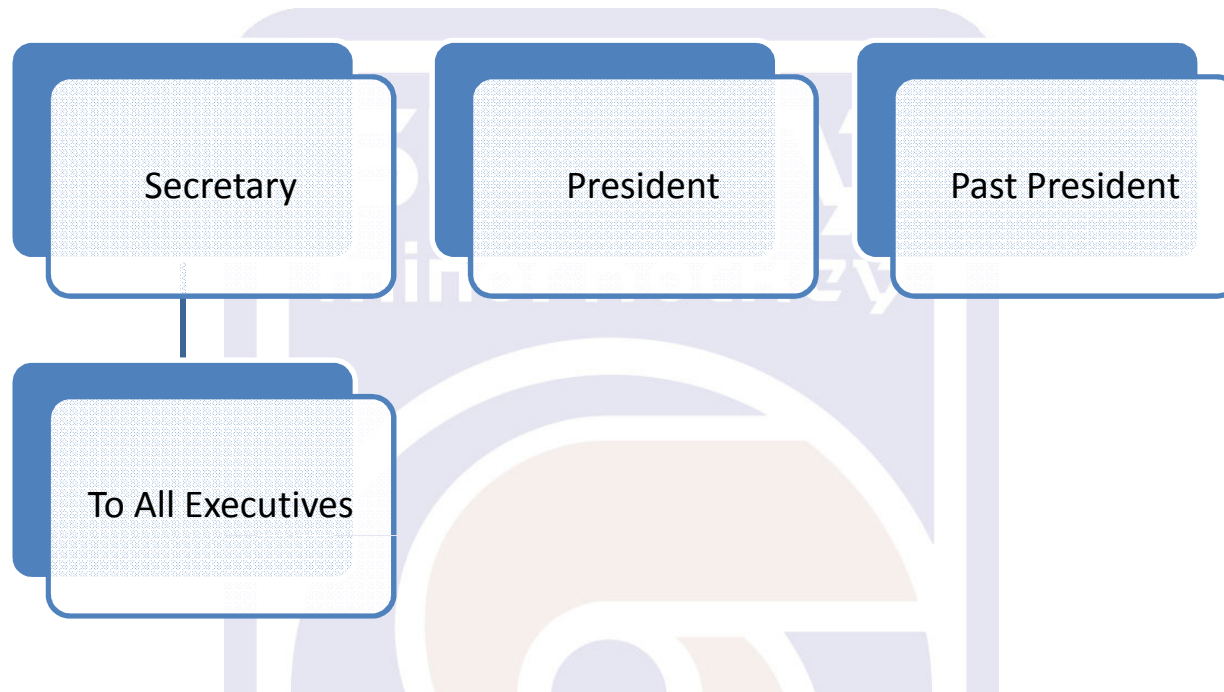
**Governance relates to consistent management, cohesive policies, guidance, processes and decision-rights for a given area of responsibility.**

**Surrey Minor Hockey Executive is held to our constitution, by laws, rules, regulations and Policy Guidelines Manual**

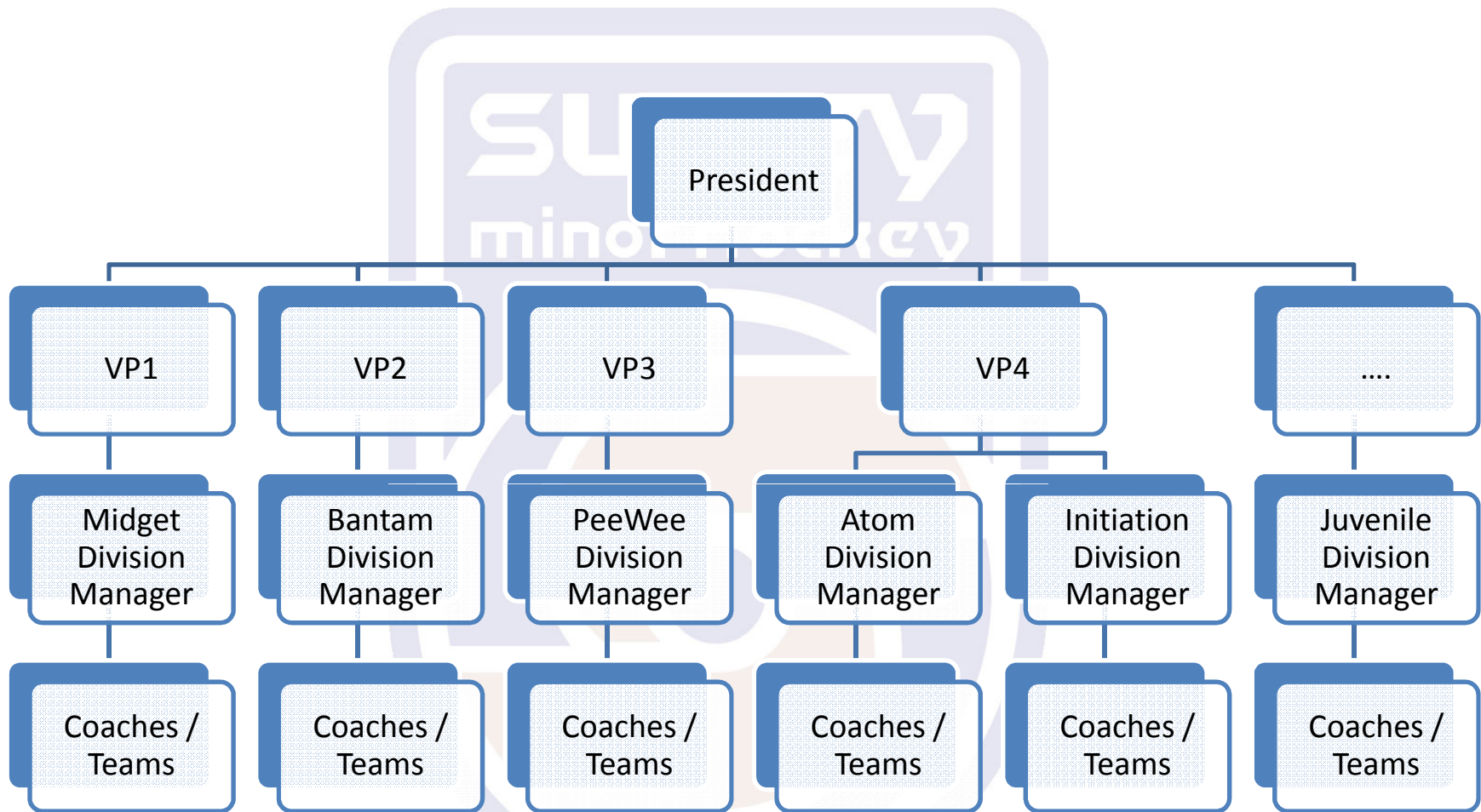
**Surrey Minor Hockey Executive is held to the rules and regulations as set by Pacific Coast Amateur Hockey Association, BC Hockey, and Hockey Canada**

# Surrey Minor Hockey Association

- More than 1,000 players
- 60 teams
  - 15 Rep Teams / 45 C Teams
- 8 elected positions
- More than 17 appointed positions
- All work as volunteers to support SMHA
- No Paid Positions within SMHA

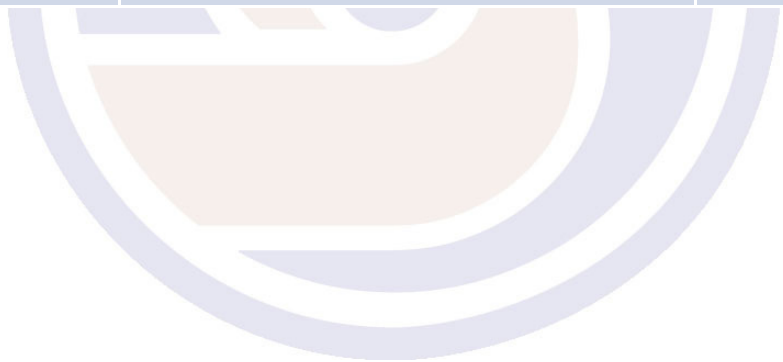


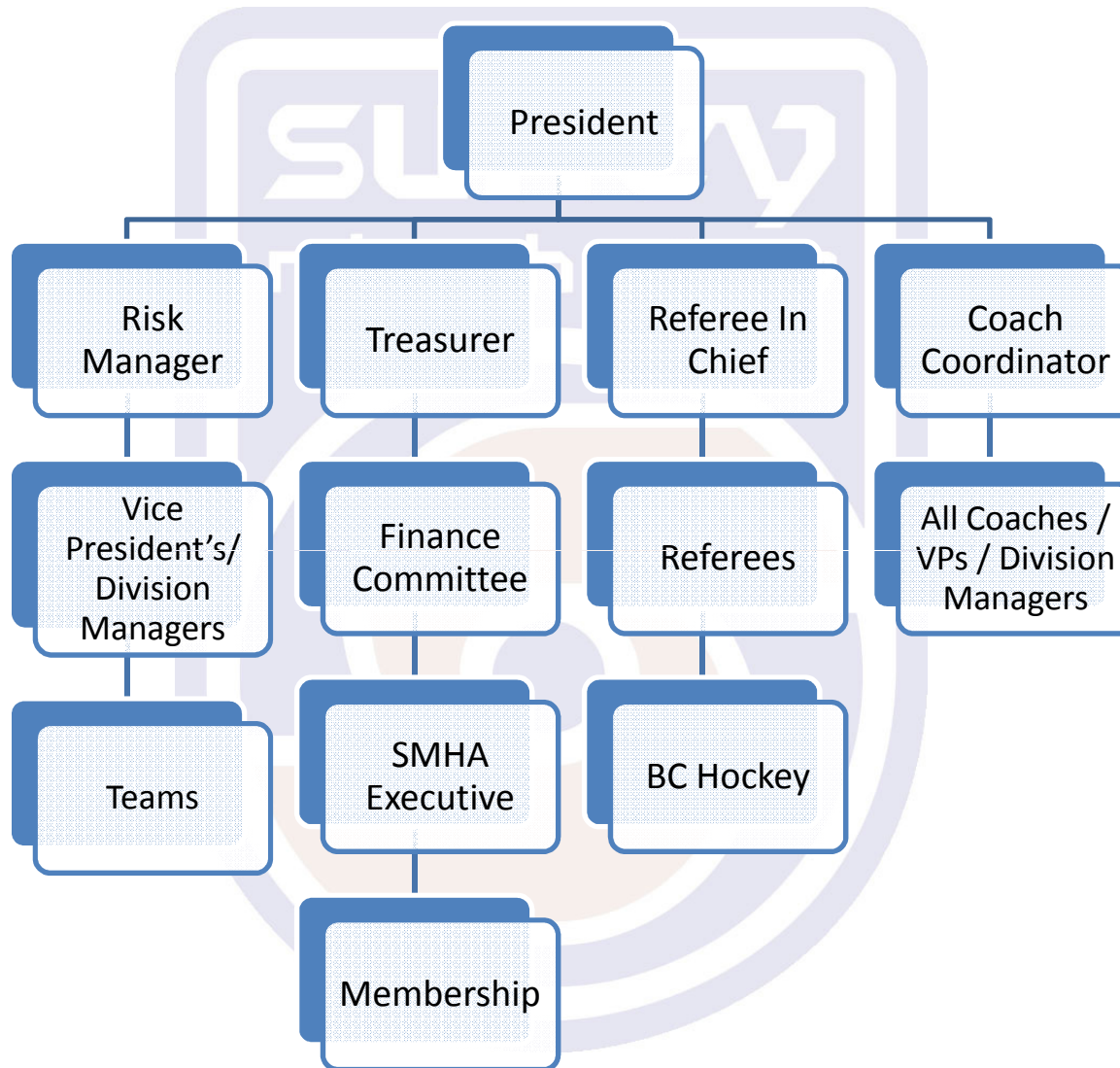
Secretary	Past President
<ul style="list-style-type: none"> <li>• Support to President</li> <li>• Minute taker, Arrange rooms when needed</li> <li>• Communication hub for entire Association</li> </ul>	<ul style="list-style-type: none"> <li>• Support to President</li> <li>• Creates Transparency</li> <li>• Via shared email / Read Only status</li> </ul>



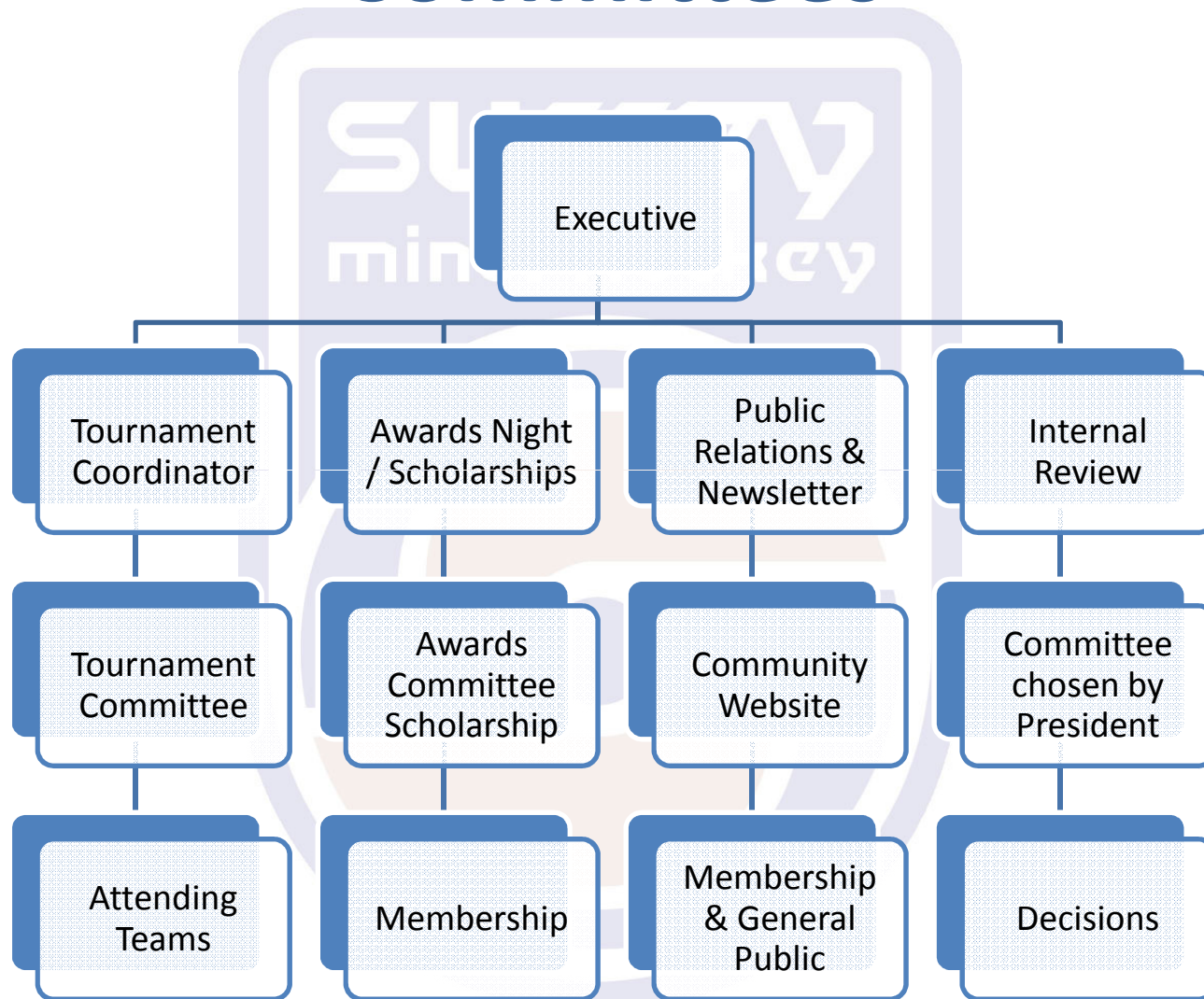


Vice Presidents	Division Managers	Coaches
Vice Presidents are the first line of support to the Division managers	Division Managers are given full autonomy to make all the decisions necessary for “every day” operations. This includes decisions on discipline for not adhering to SMHA guidelines and policies	After teams are formed, coaches run teams but they must stay within SMHA guidelines and policies





# Committees



"Far Better To Build A Boy Than To Mend A Man"

## Surrey Minor Hockey Association's Executive's Keys to Success

- **Transparency**
- **Communication**
- **Follow your own Guidelines and Policy Manuals**
- **Be consistent**
- **Respect**
- **Enthusiasm / Make it fun**